

# ANSWER PRESENTATION TOOL

Algebra 1 - Student Edit

10

2 - Exercises

1,2,4,6,8,10

ALL EVEN

Show Solu

ODD

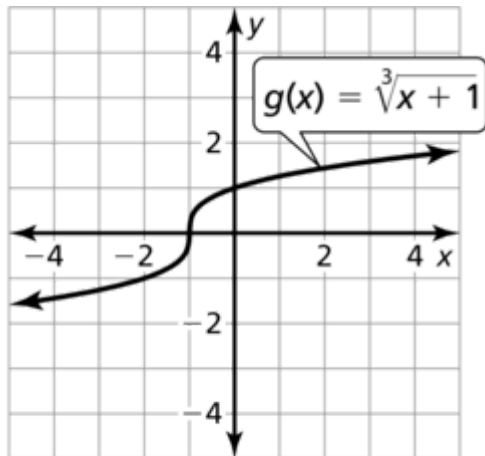
1. index

2. The domain and range of  $f$  are all real numbers.

4. A

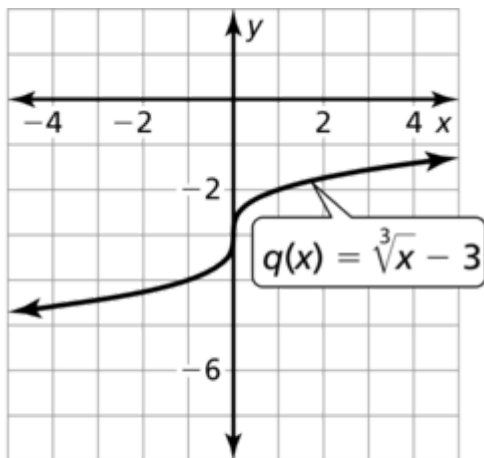
6. B

8.



The graph of  $g$  is a translation 1 unit left of the graph of  $f$ .

10.

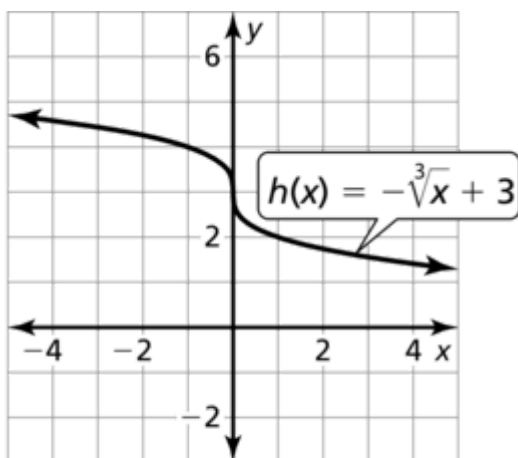


The graph of  $q$  is a translation 3 units down of the graph of  $f$ .

14. The graph of  $g$  is a translation 4 units up of the graph of  $f$ ;  
 $k = 4$

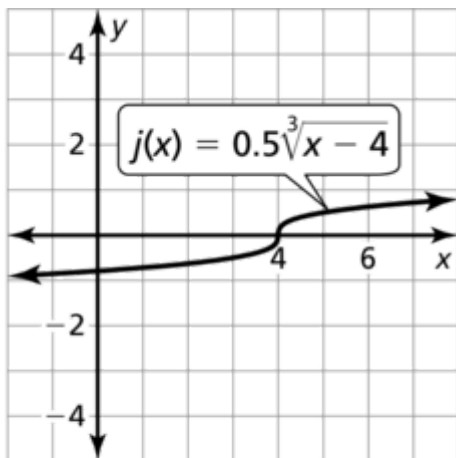
16. The graph of  $p$  is a vertical stretch by a factor of 3 of the graph of  $f$ ;  $a = 3$

18.



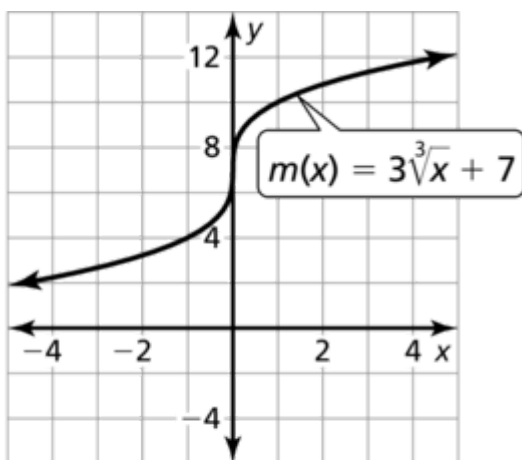
The graph of  $h$  is a reflection in the  $x$ -axis and a translation 3 units up of the graph of  $f$ .

20.



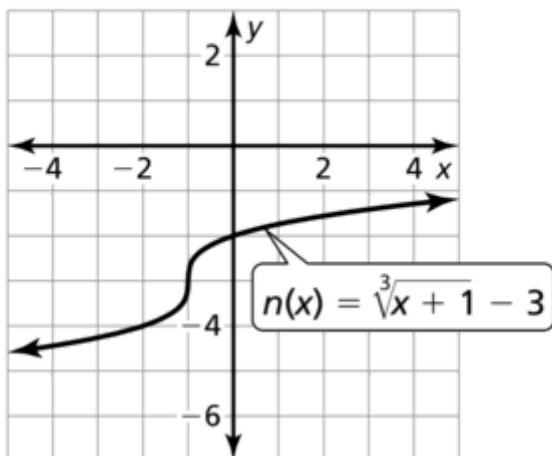
The graph of  $j$  is a vertical shrink by a factor of 0.5 and a translation 4 units right of the graph of  $f$ .

22.

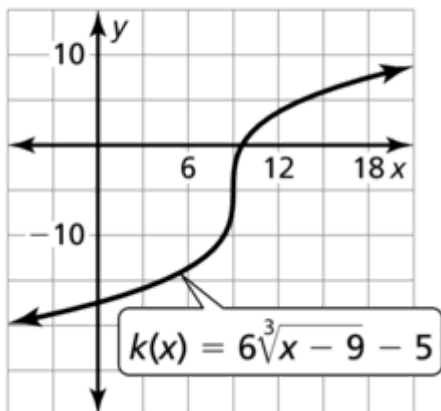


The graph of  $m$  is a vertical stretch by a factor of 3 and a translation 7 units up of the graph of  $f$ .

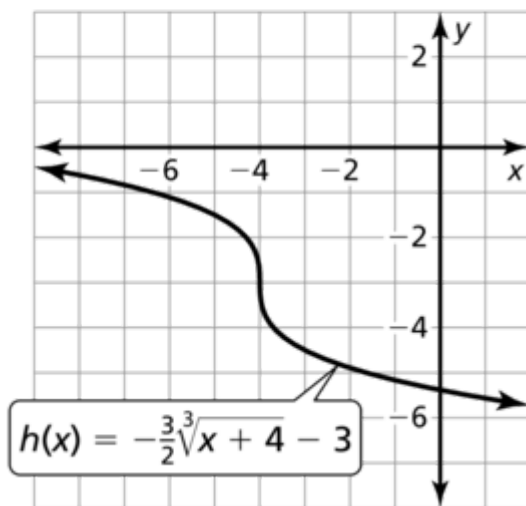
28. Translate 1 unit left and 3 units down to obtain the graph of  $n$ .



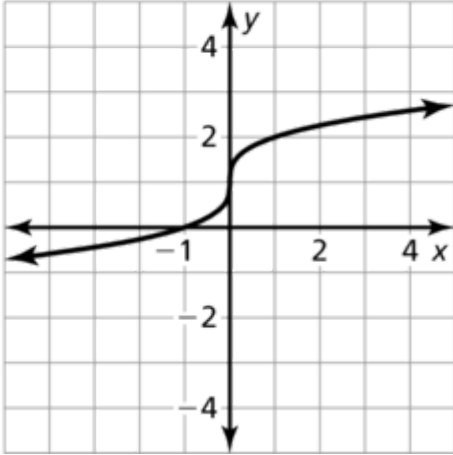
30. Translate 9 units right, stretch vertically by a factor of 6, and translate 5 units down obtain the graph of  $k$ .



32. Translate 4 units left, stretch vertically by a factor of  $\frac{3}{2}$ , reflect in the  $x$ -axis, and translate 3 units down to obtain the graph of  $h$ .

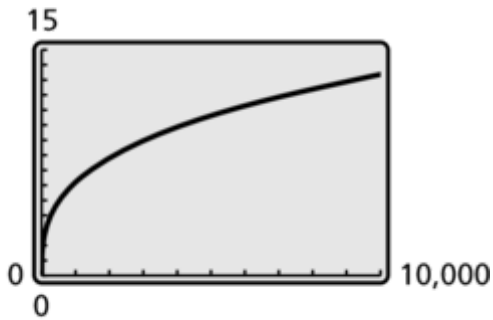


34. Values of  $x \leq 0$  are not shown in the graph.



36. The average rate of change of  $g$  is  $\frac{2}{6} \approx 0.33$  times the average rate of change of  $h$ .

38.



about 9203 in.<sup>3</sup>