

ANSWER PRESENTATION TOOL

Algebra 1 - Student Edit

8

3 - Exercises

3-10, 13, 15

ALL EVEN

Show Solu

ODD

3. $(2, -1); x = 2; 1$

4. $(-3, 2); x = -3; -1$

5. $(-2, 0); x = -2; -3$

6. $(-1, 1); x = -1; 5$

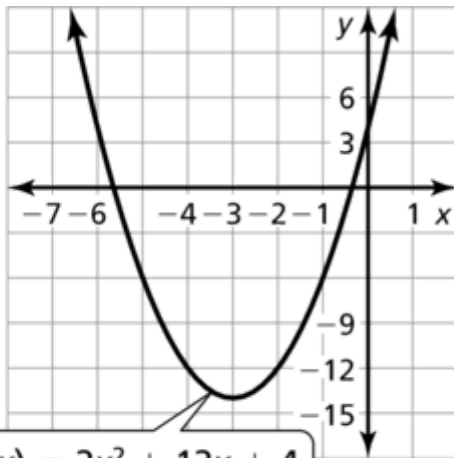
7. a. $x = 1$
b. $(1, -2)$

8. a. $x = -\frac{1}{3}$
b. $(-\frac{1}{3}, -\frac{1}{3})$

9. a. $x = -1$
b. $(-1, 8)$

10. a. $x = 2$
b. $(2, 4)$

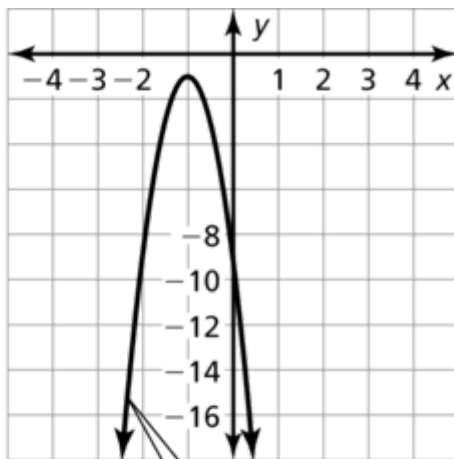
13.



$$f(x) = 2x^2 + 12x + 4$$

domain: all real numbers, range: $y \geq -14$

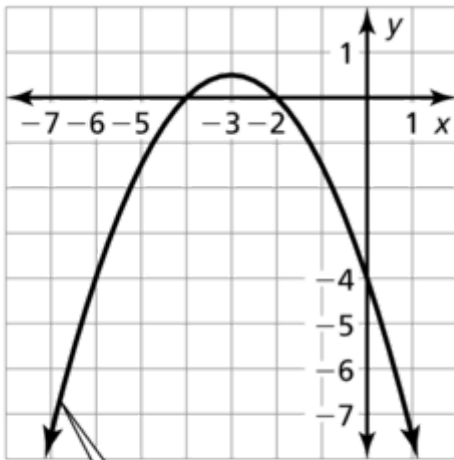
15.



$$y = -8x^2 - 16x - 9$$

domain: all real numbers, range: $y \leq -1$

18.



$$f(x) = -\frac{1}{2}x^2 - 3x - 4$$

domain: all real numbers, range: $y \leq \frac{1}{2}$

19. There should be two negatives in the substitution, one from the formula and one because b is -12 ;

$$x = -\frac{b}{2a} = -\frac{-12}{2(3)} = 2; \text{ The axis of symmetry is } x = 2.$$

21. minimum value; -12

23. maximum value; -1

25. maximum value; $66\frac{1}{2}$

28. a. 0.5 sec
 b. yes; 0.5 ft
 c. 1 sec