

ANSWER PRESENTATION TOOL

Algebra 1 - Student Edit

8

4 - Exercises

6-12 even, ;

ALL EVEN

Show Sol

ODD

6. even

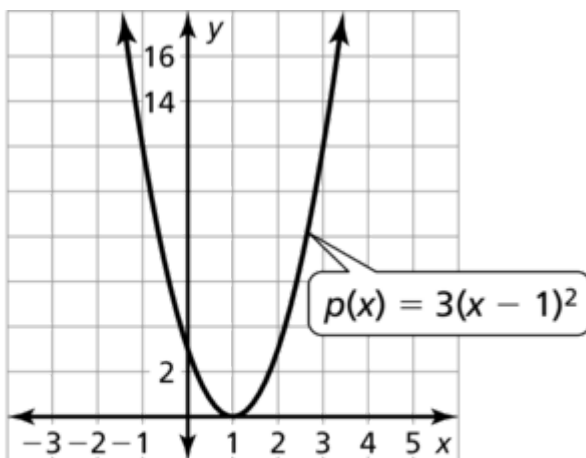
8. neither

10. odd

12. even

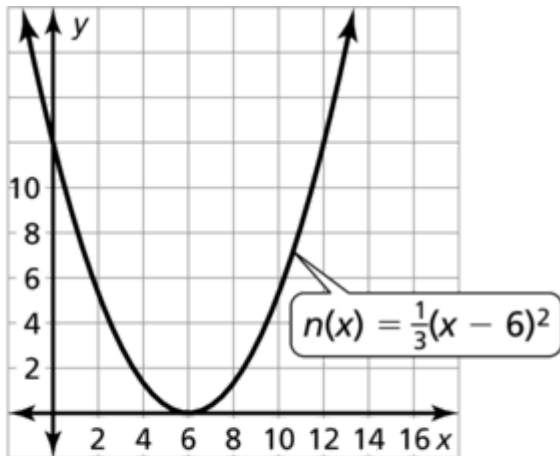
20. $(6, 0); x = 6$ 22. $(-9, 0); x = -9$

24.



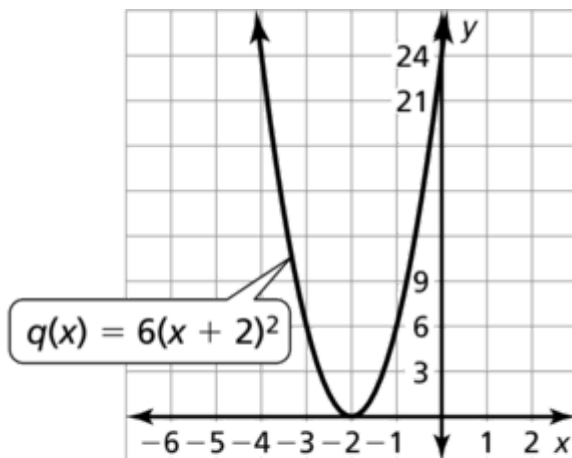
The graph of p is a horizontal translation 1 unit right and a vertical stretch by a factor of 3 of the graph of f .

26.



The graph of n is a horizontal translation 6 units right and a vertical shrink by a factor of $\frac{1}{3}$ of the graph of f .

28.



The graph of q is a horizontal translation 2 units left and a vertical stretch by a factor of 6 of the graph of f .

30. h is the x -coordinate of the vertex, not the y -coordinate;
Because $h = -8$, the vertex is $(-8, 0)$.

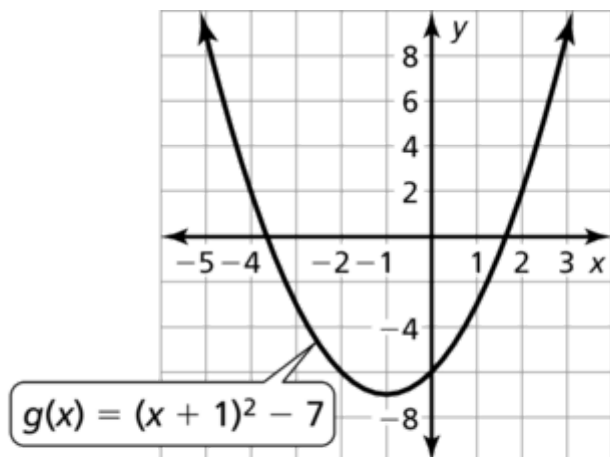
32. $(3, 6); x = 3$

34. $(6, -5); x = 6$

36. A

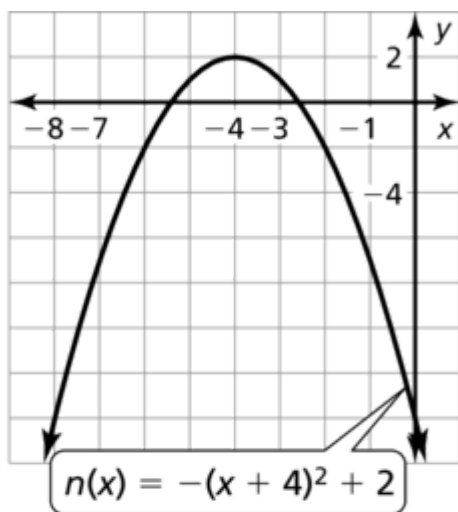
38. B

40.



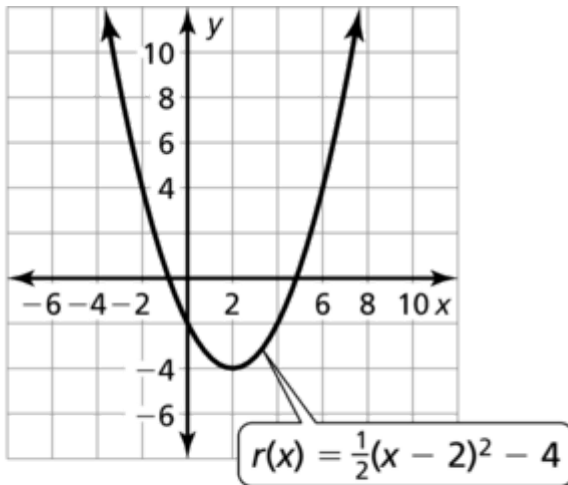
The graph of g is a translation 1 unit left and 7 units down of the graph of f .

42.



The graph of n is a reflection in the x -axis, and a translation 4 units left and 2 units up of the graph of f .

44.



The graph of r is a vertical shrink by a factor of $\frac{1}{2}$, and a translation 2 units right and 4 units down of the graph of f .